



ST. VINCENT CHARITY
MEDICAL CENTER
ROSARY HALL



1. The effects of DRUGS (including alcohol) on the brain:

The physical effects of drugs on the body:



Alcohol is a depressant that slows the activity of the brain and spinal cord...meaning it slowly puts the brain to SLEEP.

Marijuana is an addictive drug and other addictive drugs are often added to it and there are over 2,000 unidentified chemicals in marijuana.



- **Effects of Marijuana.**

- Feelings of slowing down
- Distortions of time and thought
- Increased heart rate
- Increased anxiety and paranoia
- Isolating behaviors
- Lack of coordination
- Effects short term memory (with regular use effect on short term memory is permanent)
- Affects Respiratory and Immune system (Making it harder for your body to fight off infections causing sickness).
- Depth perception is affected
- Damage to lungs – One joint = 10 cigarettes (cancer causing carcinogens)
- Slowed reaction time and reduced ability to concentrate
- **Withdrawal:** Loss of appetite, restlessness, irritability.





ST. VINCENT CHARITY
MEDICAL CENTER
ROSARY HALL

• Effects of Cocaine & Crack Cocaine

- Extreme and short euphoria
- Highly addictive illegal drug
- Depletes dopamine in the brain and create intense craving to re-create the “High”
- Once this occurs the **BRAIN is addicted** to the drug and never forgets the feeling...**EVER.**





ST. VINCENT CHARITY
MEDICAL CENTER
ROSARY HALL

- **Effects of Methamphetamine AKA Meth**
 - Highly addictive, even more than cocaine.
 - Addiction can result after as few as 3 uses.
 - Effects on the body are immediate.
 - Most addictive substance we know of to date.
 - Gases produced when made are poisonous/creates toxic waste.





ST. VINCENT CHARITY
MEDICAL CENTER
ROSARY HALL



- **Prescription Drugs**

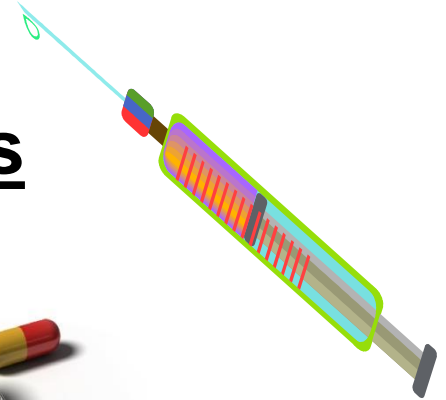
- Even drugs that are prescribed to you can be addictive
- Pain pills such as Vicodin, Percoset, Tylenol with Codine, Oxycotin
- If you have a prescription ...Make sure you take them as prescribed
- Do Not take someone else's prescription



ST. VINCENT CHARITY
MEDICAL CENTER
ROSARY HALL

- **Effects of Depressants & Narcotics
(OPIATES /HEROIN)**

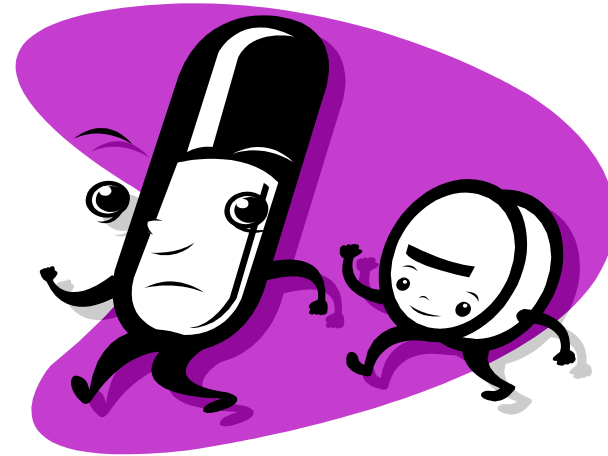
- Euphoria
- Lethargy, drowsiness
- Confusion
- constricted or dilated pupils
- Slurred speech
- Lack of coordination
- **Withdrawal includes:** Tremors-chills-shakes-agitation-hallucinations, body aches, bones ache, abdominal pain, muscle aches, exhaustion, depression





- **Effects of Stimulants**

- Agitation
- Excessive activity
- Argumentativeness
- Loss of appetite
- Excessive sweating
- Raised pulse, blood pressure
- **Withdrawal includes:** Tremors-chills-shakes-agitation-hallucinations, body & bones ache, abdominal pain, muscle aches, exhaustion, depression

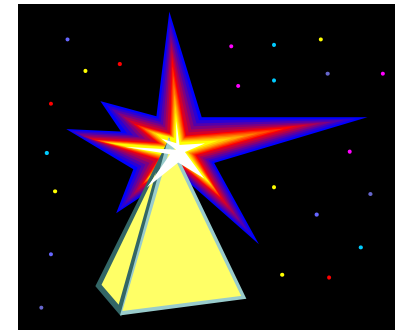




ST. VINCENT CHARITY
MEDICAL CENTER
ROSARY HALL

Hallucinogens (PCP – MOLLY - BATH SALTS - CLUB DRUGS - ECSTASY)

- Drugs that affect the mind, causing changes in perception and consciousness.
- Highly unpredictable effects
- Flashbacks and general disorientation... even years after the last use
- Creates a “psychotic” state
- Hallucination
- Paranoia
- Panic attacks
- Aggressive behavior
- **Withdrawal includes:** Visual hallucinations, disorientation, confusion, paranoia, anxiety, panic, violence, extreme hyperactivity





ST. VINCENT CHARITY
MEDICAL CENTER
ROSARY HALL



- **Inhalants**
- Volatile, concentrated chemicals
- Overdose may result in heart attack, coma, suffocation, death
- Irreversible brain damage can result from a single episode or dose



ST. VINCENT CHARITY
MEDICAL CENTER
ROSARY HALL

- **The FOUR PHASES to Chemical Dependency:**
- **Phase 1: Experimental phase** – makes you feel good... can control the use.
- **Phase 2: Social/Recreational Use** – Anticipate and plan to use, chemicals adds fun/relaxation, not upset when chemicals are not present
- **Phase 3: Harmful Dependency** – New friends – (mostly users), chemical means more to user, preoccupation with using, broken promises occur more frequently, trouble follows use, tolerance develops, becomes defensive about use.
- **Phase 4: Using To Feel Normal** – Chemical needed to function, not using to get high, they are using not to be **sick**, total loss of control (feeling, thoughts, behaviors, and loss of choices, always in emotional pain. **EITHER HELP IS SOUGHT OR INSANITY OR DEATH OCCURS.**



ST. VINCENT CHARITY
MEDICAL CENTER
ROSARY HALL

ADDICTION AFFECTS THE ENTIRE
FAMILY... ***SO PLEASE***
DON'T START!

